

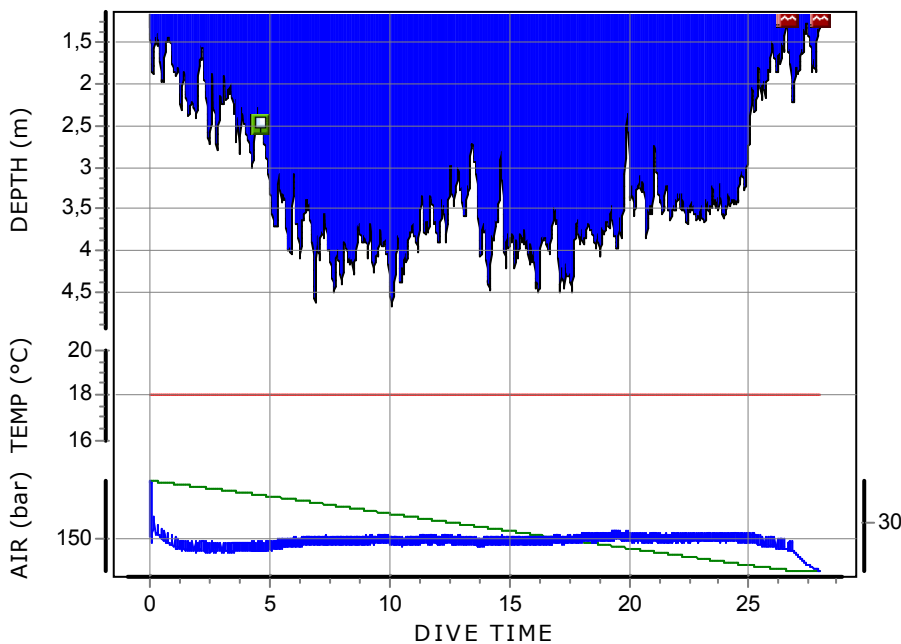
30. 17-08-2007 Marselisborg Lystbaadehavn

Marselisborg Lystbaadehavn

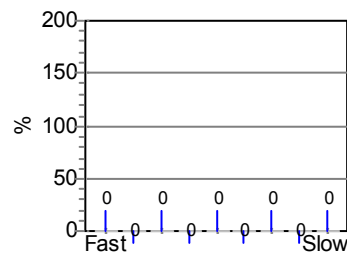
Information from dive computer

Other information

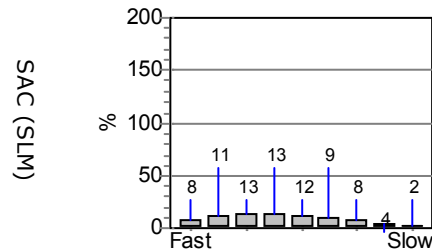
Dive no.	<b>30</b>	Weather	<b>Clear Sky / Night</b>	Dive manually added	<b>No</b>
Start time	<b>17-08-2007 22:05:22</b>	Visibility	<b>3-5 M</b>	Tissue pressures invalid	<b>No</b>
End time	<b>17-08-2007 22:32:22</b>	Weight used	<b>12 kg</b>	Cylinder size	<b>12 liters</b>
Dive time	<b>00:27.00</b>	Temperatures		Working pressure	<b>300 bar</b>
Max depth	<b>4.7 m</b>	Start of dive	<b>18 °C</b>	Cylinder pressure	
DC Dive no.	<b>1</b>	Max depth	<b>18 °C</b>	Start	<b>196 bar</b>
Surface Interval	<b>86:30.00</b>	End of dive	<b>18 °C</b>	End	<b>125 bar</b>
ID no.	<b>72101106</b>	Buddy	<b>Mette</b>	Average depth	<b>3.2 m</b>
Personal info	<b>knuspar@knuspar.dk</b>	Boat name		SAC Rate	<b>20,9 SLM</b>
Model	<b>D6</b>	Dive Master	<b>Camilla Petersen</b>	Air used	
Sampling Rate	<b>1 sec</b>	Custom 1		Pressure used	<b>71 bar</b>
Altitude mode	<b>A0</b>	Custom 2		Rate used	<b>2,6 bar/min</b>
Personal settings	<b>P0</b>	Custom 3		Volume gas used	<b>792,4 liters</b>
Dive type	<b>Air</b>	Custom 4			
Alarms Recorded	<b>3</b>	Custom 5			
Oxygen Percent	<b>42%</b>	Dive gear			
OLF					



Tissue saturation on start



Tissue saturation on end



Notes

Part 3/5 Of my Advanced openwater PADI Certification.

A Nightdive, nothing special, 10 divers including 2 instructors.