

26. 11-08-2007 Marselisborg Lystbaadehavn

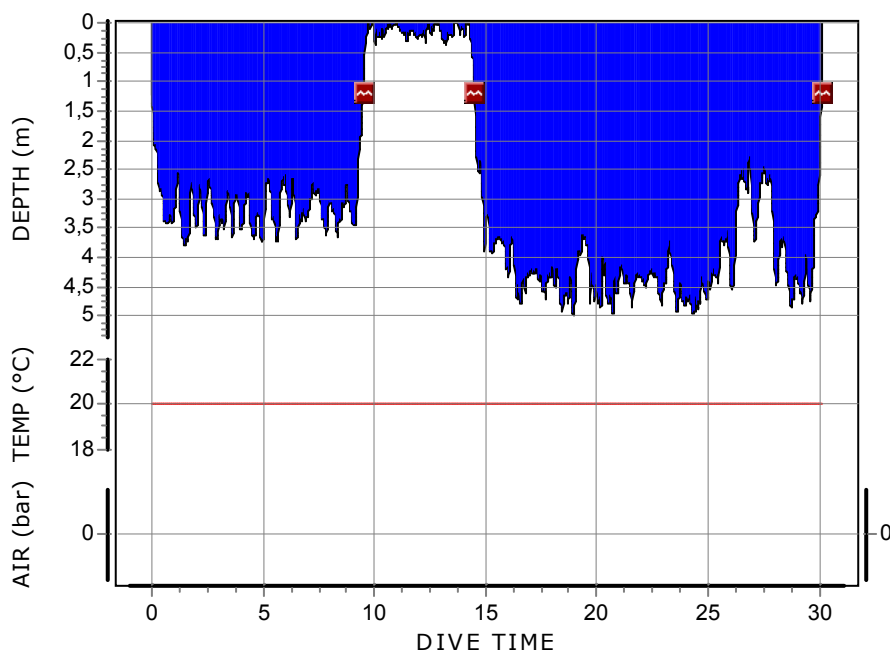
Marselisborg Lystbaadehavn

Information from dive computer

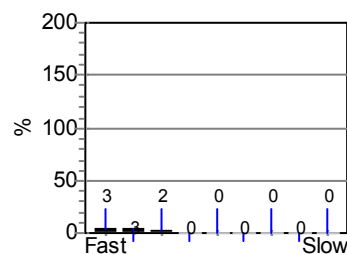
Dive no.	<b>26</b>	Weather	
Start time	<b>11-08-2007 10:15:11</b>	Visibility	
End time	<b>11-08-2007 10:40:11</b>	Weight used	<b>0 kg</b>
Dive time	<b>00:25.00</b>	Temperatures	
Max depth	<b>5.0 m</b>	Start of dive	<b>20 °C</b>
DC Dive no.	<b>1</b>	Max depth	<b>20 °C</b>
Surface Interval	<b>00:07.00</b>	End of dive	<b>20 °C</b>
ID no.	<b>72101106</b>	Buddy	
Personal info	<b>knuspar@knuspar.dk</b>	Boat name	
Model	<b>D6</b>	Dive Master	
Sampling Rate	<b>1 sec</b>	Custom 1	
Altitude mode	<b>A0</b>	Custom 2	
Personal settings	<b>P0</b>	Custom 3	
Dive type	<b>Air</b>	Custom 4	
Alarms Recorded	<b>4</b>	Custom 5	
Oxygen Percent	<b>30%</b>	Dive gear	
OLF			

Other information

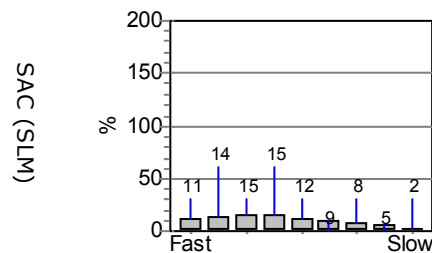
Dive manually added	<b>No</b>
Tissue pressures invalid	<b>No</b>
Cylinder size	<b>12 liters</b>
Working pressure	<b>200 bar</b>
Cylinder pressure	
Start	<b>0 bar</b>
End	<b>0 bar</b>
Average depth	<b>3.7 m</b>
SAC Rate	<b>0 SLM</b>
Air used	
Pressure used	<b>0 bar</b>
Rate used	<b>0 bar/min</b>
Volume gas used	<b>0 liters</b>



Tissue saturation on start



Tissue saturation on end



Notes