

45. 11-09-2007 10:03:23 Marsa Alam

Marsa Alam

Dolphin House

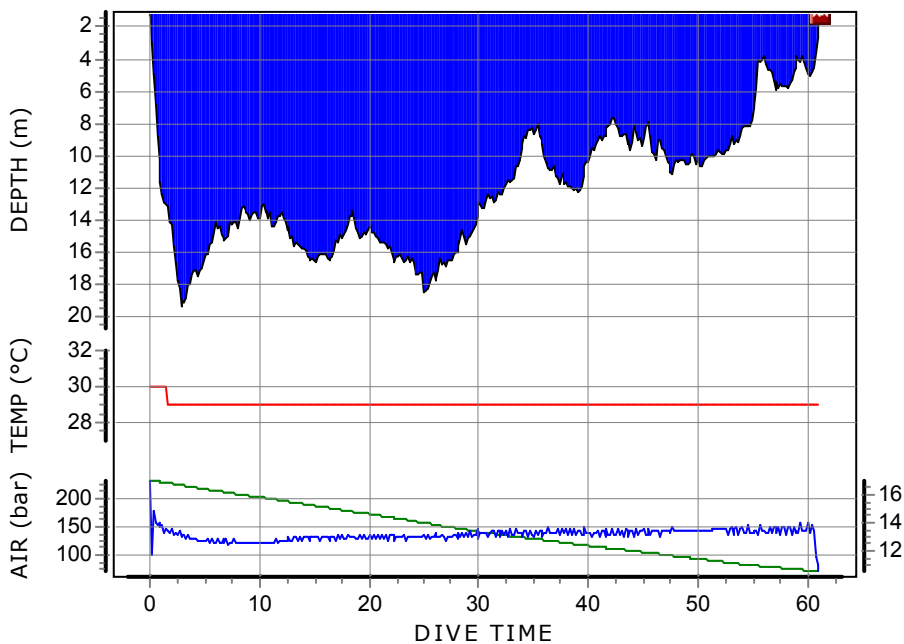
Information from dive computer

Other information

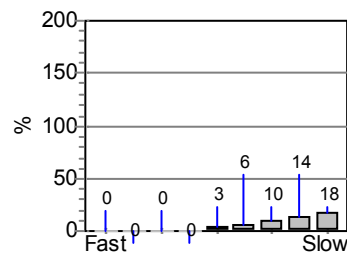
Dive no.	<b>45</b>
Start time	<b>11-09-2007 10:03:23</b>
End time	<b>11-09-2007 11:04:23</b>
Dive time	<b>01:01.00</b>
Max depth	<b>19.4 m</b>
DC Dive no.	<b>16</b>
Surface Interval	<b>03:28.00</b>
ID no.	<b>72101106</b>
Personal info	<b>knuspar@knuspar.dk</b>
Model	<b>D6</b>
Sampling Rate	<b>10 sec</b>
Altitude mode	<b>A0</b>
Personal settings	<b>P0</b>
Dive type	<b>Air</b>
Alarms Recorded	<b>2</b>
Oxygen Percent	<b>21%</b>
OLF	<b>4 %</b>

Weather	
Visibility	<b>~20 M</b>
Weight used	<b>10 kg</b>
Temperatures	
Start of dive	<b>30 °C</b>
Max depth	<b>29 °C</b>
End of dive	<b>29 °C</b>
Buddy	<b>Bo Nielsen</b>
Boat name	
Dive Master	
Custom 1	
Custom 2	
Custom 3	
Custom 4	
Custom 5	
Dive gear	

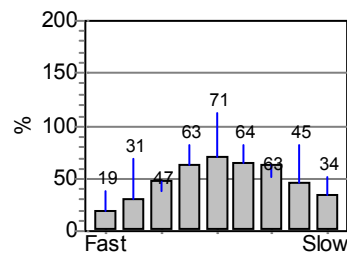
Dive manually added	<b>No</b>
Tissue pressures invalid	<b>No</b>
Cylinder size	<b>12 liters</b>
Working pressure	<b>300 bar</b>
Cylinder pressure	
Start	<b>235 bar</b>
End	<b>70 bar</b>
Average depth	<b>12.0 m</b>
SAC Rate	<b>12,2 SLM</b>
Air used	
Pressure used	<b>165 bar</b>
Rate used	<b>2,7 bar/min</b>
Volume gas used	<b>1811 liters</b>



Tissue saturation on start



Tissue saturation on end



Notes